



Why planned giving?

The Catholic Church has been there for you and your family during the most important moments of your lives. You want to be there for the Catholics of tomorrow as they start their journey of faith.

By supporting our Planned Giving Program, you can ensure that the mission and pastoral outreach of the Archdiocese and its parishes continue and grow both for today's needs and for those of our children and grandchildren.

Why a donation in your will?

Benefits to you:

- Donation receipt which can be used in year of death and previous taxation year
- You benefit from the assets during your lifetime
- You retain control of assets

Benefits to the church:

- Income from bequest will continue your regular donations
- Insures continued support of the Church for its ministries
- Provides assets and funds for the future

Prior to making a gift, we recommend that donors receive independent professional advice concerning the possible financial, taxation and legal consequences of doing so.

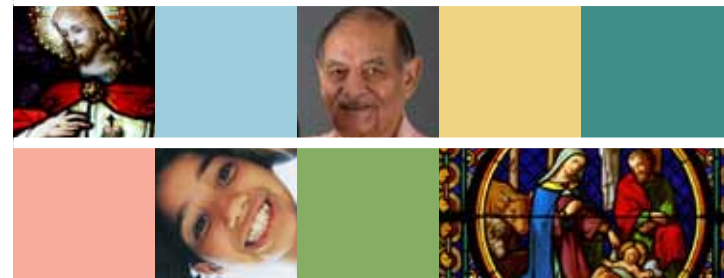
To obtain more information about leaving a bequest to your Church including the suggested wording for a Will, please consult the Planned Giving section of our website archottawa.ca or contact the following:

At the parish:

- your pastor, or
- the parish coordinator for the Planned Giving Program

At the Archdiocese:

Development Office
Tel: 613-738-5025, ext. 235



Leaving a legacy of faith - Remembering your church in your will



A Planned Giving Program for Catholics

*...in thanks for the gift of faith
...a gift for the future of faith*

613.738.5025

www.archottawa.ca

1247 KILBORN PLACE, OTTAWA, ONTARIO K1H 6K9

May 2010

Leaving a legacy of faith - Remembering your church in your will



WHAT IS A WILL?

A Will is a legal document that contains directions regarding the distribution of your estate among the persons or charities that you may want to benefit. It names one or more representatives who will be responsible for carrying out the terms of your Will.

SHOULD I PREPARE A WILL?

It is estimated that approximately 60% of adult Canadians do not have a Will or an updated Will. Thinking about death can be depressing with the result that many people avoid the thought and do not prepare a Will nor an estate plan.

WHAT IF I DON'T HAVE A WILL?

Should an Ontario resident die without a Will, you are said to die intestate and your estate will be managed by a *Court-appointed administrator who will distribute your estate according to the laws of Ontario*. Your assets may not be distributed to those to whom you wish, and charities, including the Church, would not be entitled to any gift under your estate. Is this the situation that we want our families to inherit?

WHAT DOES A WILL ACCOMPLISH?

Should you want to ensure that your assets are distributed the way you want and that your wishes are followed and taxes reduced, then make a Will. By making a Will, you choose your executor, or co-executors, who will follow your wishes and instructions as to gifts from your estate.

Review your Will on a regular basis and update it when necessary. Changes could be necessary due to changes in income tax legislation, changes in the assets bequeathed or gifted under your Will, in the event that your named executor is no longer able to carry out the task of administering your Will, or in the event one wishes to change a beneficiary.



How can a donation in your will help your church?

At the parish level:

- Helping the parish to continue to act as a focal point of the community
- Provide important ministries to future generations
- Hiring of staff to carry out pastoral activities (e.g. youth ministry and sacramental preparation)
- Helping with the cost of repairs and upkeep of aging buildings
- Expansion or construction of needed facilities

At the diocesan level:

- Recruitment and formation of candidates for the priesthood (seminarians)
- Support of the ongoing formation of pastors
- Formation and support of ministries and pastoral offices including Permanent Deacons, Adult Lay Formation, Youth & Family Ministry, and Pastoral Care in hospitals and long-term care facilities
- Support of retired and infirm priests

